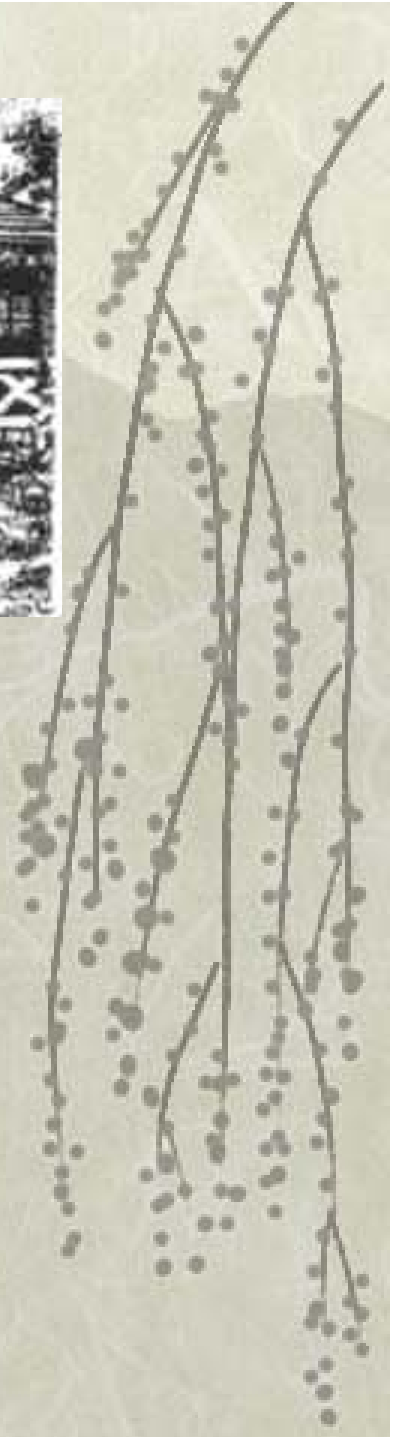




Mark Twain

By:

Shawn Pickett

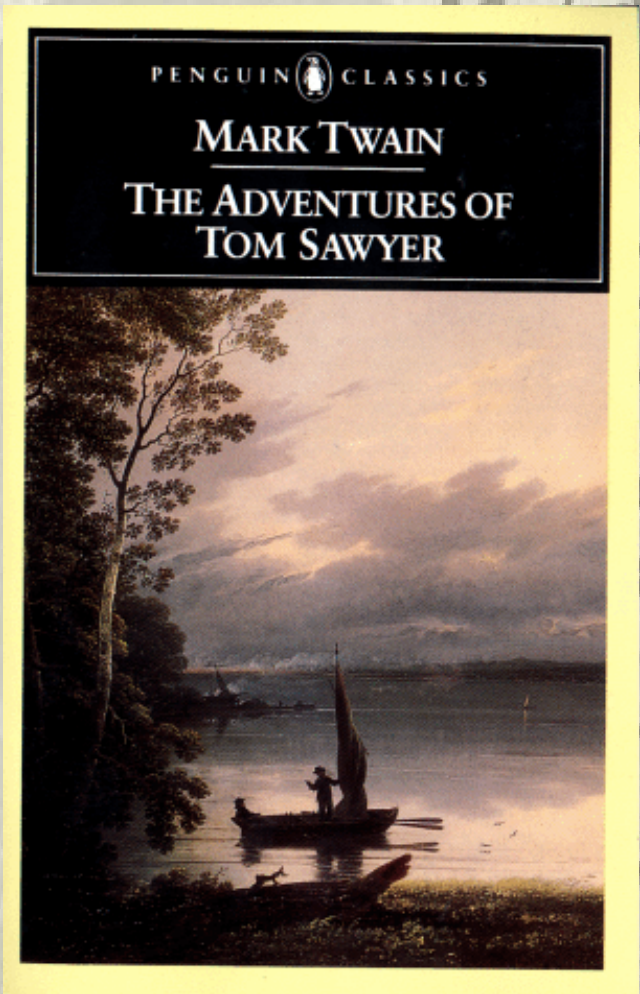


- ❖ Born in 1835 in Florida, Missouri
- ❖ Real name was Samuel Langhorne Clemens
- ❖ Was a riverboat pilot on the Mississippi River
- ❖ Father was a lawyer



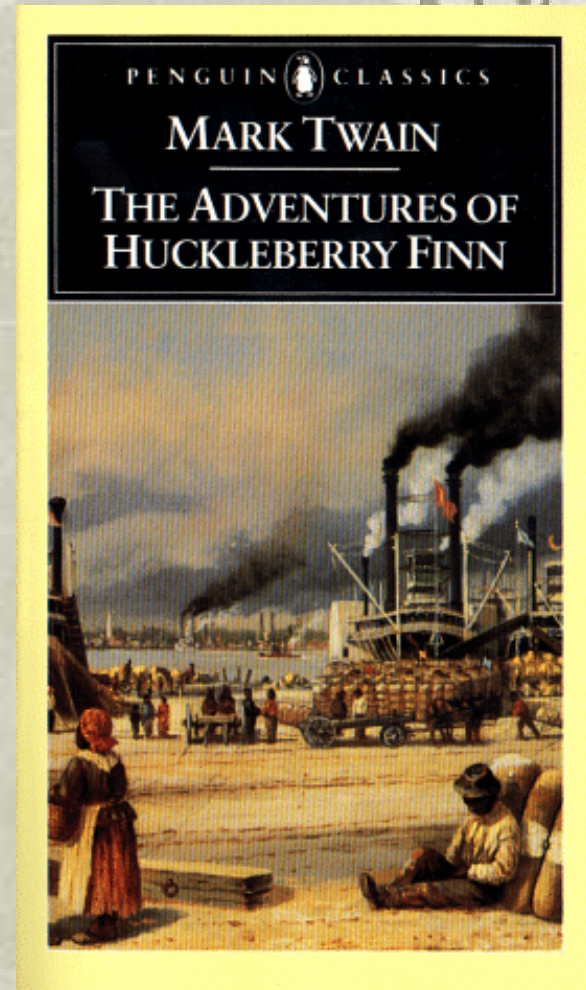
The Adventures of Tom Sawyer

- ❖ Based in the town of St. Petersburg, Missouri-relates to Twain's experiences
- ❖ Tom Sawyer is a typical boy of his time and place
- ❖ Developmental tasks
- ❖ Encounters Huck Finn



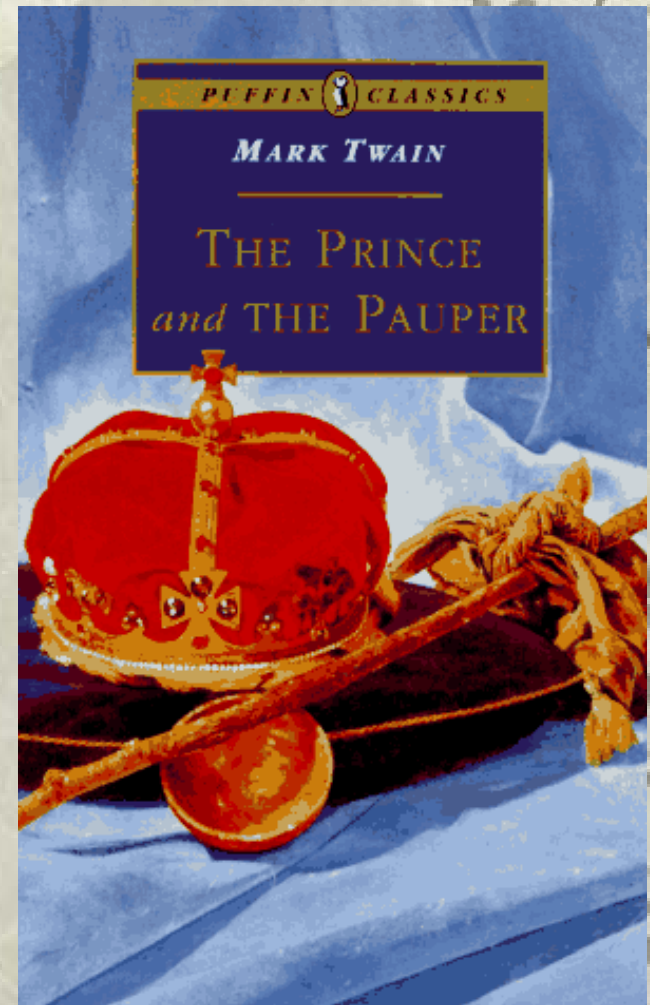
The Adventures of Huckleberry Finn

- ❖ Follows the character of Huck Finn from Tom Sawyer
- ❖ Huck Finn tells his own story
- ❖ Huck Finn escapes to an island where he encounters a slave named Jim
- ❖ Developmental tasks



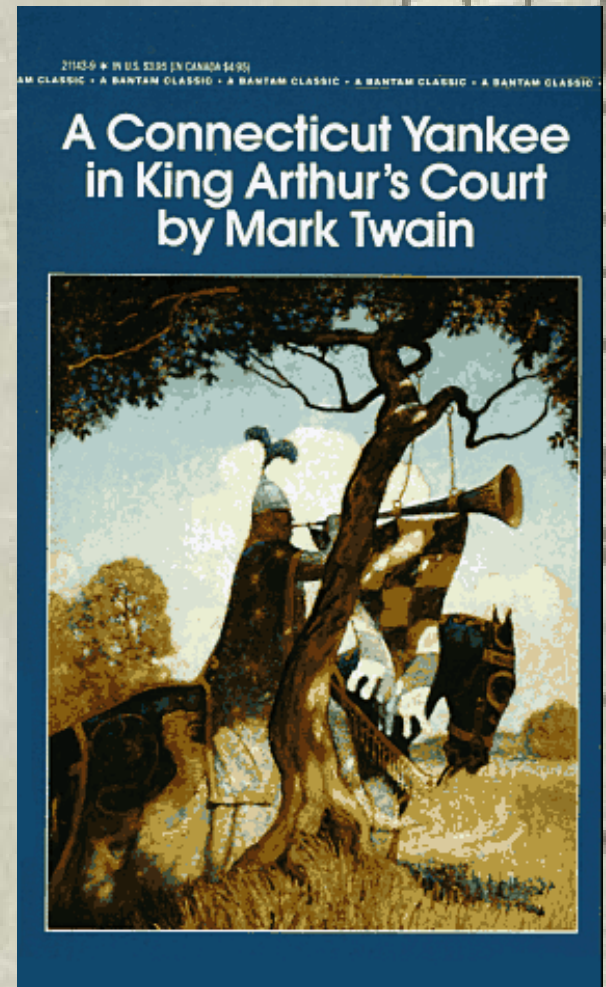
The Prince and the Pauper

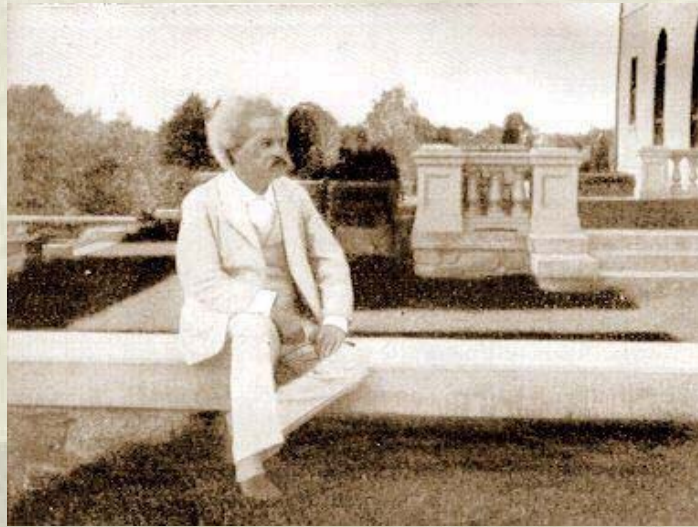
- ❖ Main characters in this story are Tom Canty and Edward Tudor
- ❖ The boys switched lives
- ❖ Find themselves within a different society
- ❖ Developmental tasks



A Connecticut Yankee in King Arthur's Court

- ❖ Main character is Hank Morgan
 - Worked in a munitions factory
- ❖ Was transported back in time to the times of King Arthur's Court





- ❖ Common traits of these 4 books
 - Young men going through adolescence
 - Finding themselves within a society
- ❖ Twain's impact on literature